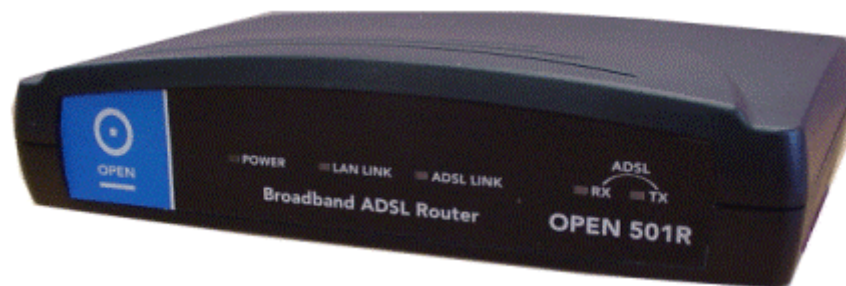




# OPEN 501R ADSL Router Application Note

## Configuration Backup and Restore

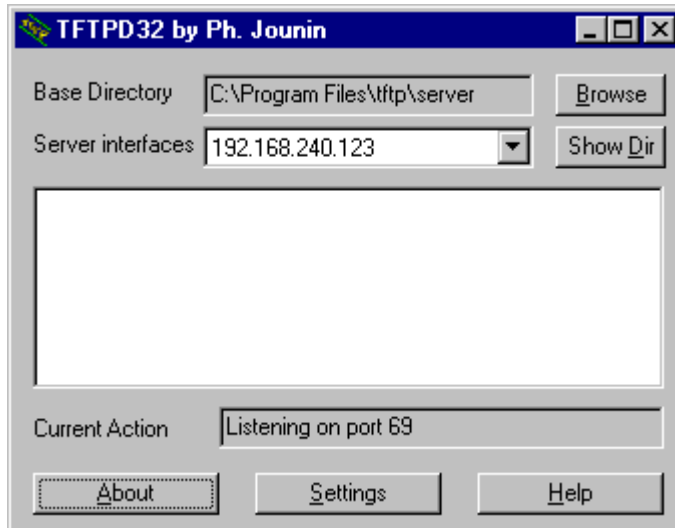


### Copyright

Copyright© 2001 OPEN Networks Limited. All rights reserved. The content of this manual is subject to change without notice. The information and messages contained herein are proprietary to OPEN Networks Pty Limited. No part of this manual may be translated, transcribed, reproduced, in any form, or by any means without prior written permission by OPEN Networks Limited.

## Setup

1. Install a TFTP server on your computer – there are many freeware packages, the one used in this application note is tftpd32 from <http://tftpd32.jounin.net/>.
2. Run the TFTP server – a screen similar to that below should appear:



3. Connect your computer to the OPEN 501R LAN port, and make sure that the IP address on your computer is in the same subnet as the OPEN 501R.

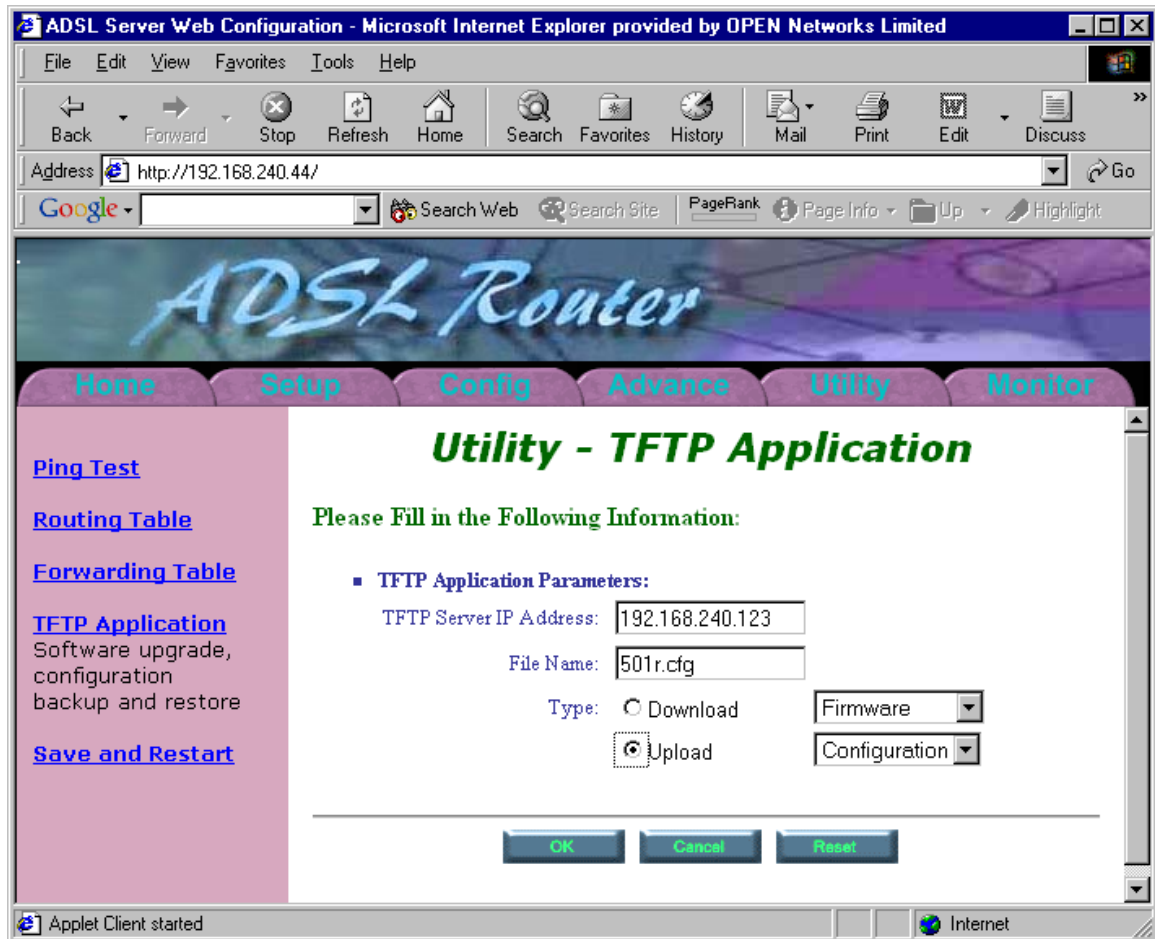
## Backup a configuration

1. Log on to the OPEN 501R using the RS-232 console, telnet, or the web server.
2. Select the Utilities menu and the TFTP option.
3. Enter in the IP address of your computer as the TFTP Server IP Address.
4. Enter in the filename that you want the configuration to be saved as.
5. Select Upload and Configuration, as below:

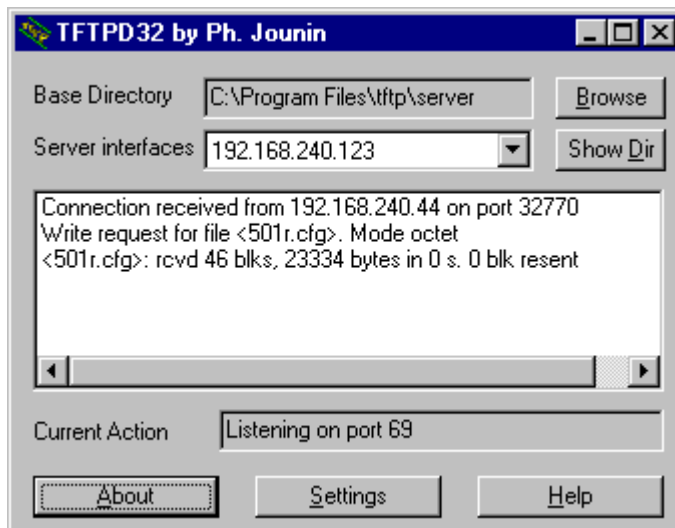
```

ADSL Router                TFTP Application                V2.420.3
-----
TFTP Server IP Address     : 192.168.240.123
File Name                  : 501r.cfg
TFTP Option(TAB)          : Upload
Application Type(TAB)      : Configuration
-----
      ^S - Go      ^L - Home Menu      ^X - Prev Menu

PATH> MAIN/UTIL/TFTP
MESSAGE>
    
```



6. Press the OK button, or Control-S to start the transfer.
7. The TFTP server application should show that the file has been transferred:



## Restore a Configuration

1. Use the same setup as before.
2. Select Download and Configuration in the TFTP menu
3. Press OK or Control-S to restore the configuration
4. Save the restored configuration to flash and restart the router.

## Further Help

Further help can be found from:

- **Service Provider:** please contact your Service Provider.



### Warning

- Before servicing or disassembling this equipment, always disconnect all power and telephone lines from the wall outlet.
- Use an appropriate power supply and a UL Listed telephone line cord. Specification of the power supply is clearly stated in Appendix B – Specification of the OPEN 501R User Guide.
- The socket outlet must be installed near the equipment and shall be easily accessible.
- The socket outlet must be protected by a suitable fuse at the local switch board for short circuit or over current protection.
- This product will not function without mains power.